

Pioneer Prime

PP66S12L71



Typical Pump Configuration

Performance

Pioneer Prime series - vacuum assisted, end suction centrifugal pump

Bare shaft, frame mounted, fully automatic dry priming, vacuum assisted, run dry, heavy duty solids handling pump

| | |
|----------------------|---|
| Size | 6" x 6" 150 x 150 mm |
| Flow, Max | 3,600 USgpm 830 m ³ /h 230 l/s |
| Head, Max | 260 feet 80 meters |
| Flow at BEP | 2,200 USgpm 510 m ³ /h 140 l/s |
| Efficiency at BEP | 81% |
| Solids Handling, Max | 3.0" 76 mm |
| Operating Speed, Max | 2200 rpm |
| Suction Connection | 6" (150 mm) 150 ANSI Flanges |
| Delivery Connection | 6" (150 mm) 150 ANSI Flanges |
| Bearing Lubrication | Oil STD Grease optional |
| Fasteners | Imperial |

Applications

| | |
|--------------|------------------|
| Construction | Waste Water |
| Industrial | Power Generation |
| Mining | Environmental |

High flow, solids handling heavy duty pump

The PP66S12 is a high flow, ruggedized pump designed to operate over a broad range of performance while delivering outstanding suction lift. The rugged construction and modular design provide proven reliability and flexibility in the most demanding applications.

UltraPrime™ Priming System

| | |
|------------------------|---|
| Priming System | Mechanically Driven Diaphragm Style Vacuum Pump |
| Air Removal Capability | 50 CFM |
| Priming Chamber | Single chamber with positive sealing air separation PosiValve™ with stainless steel float ball & linkage. |
| Discharge Check Valve | Swing Style - ductile iron with Buna-n Disc Valve |

Other Specifications

| | |
|-------------------|--|
| Mechanical Seal | Single seal w/ tungsten carbide vs. silicon carbide seal faces, Viton® elastomers, 300 series stainless steel hardware and spring, designed for indefinite dry running |
| Pump End Bearing | Single row ball |
| Drive End Bearing | Single row ball |
| Shaft | 17-4 PH Stainless Steel |

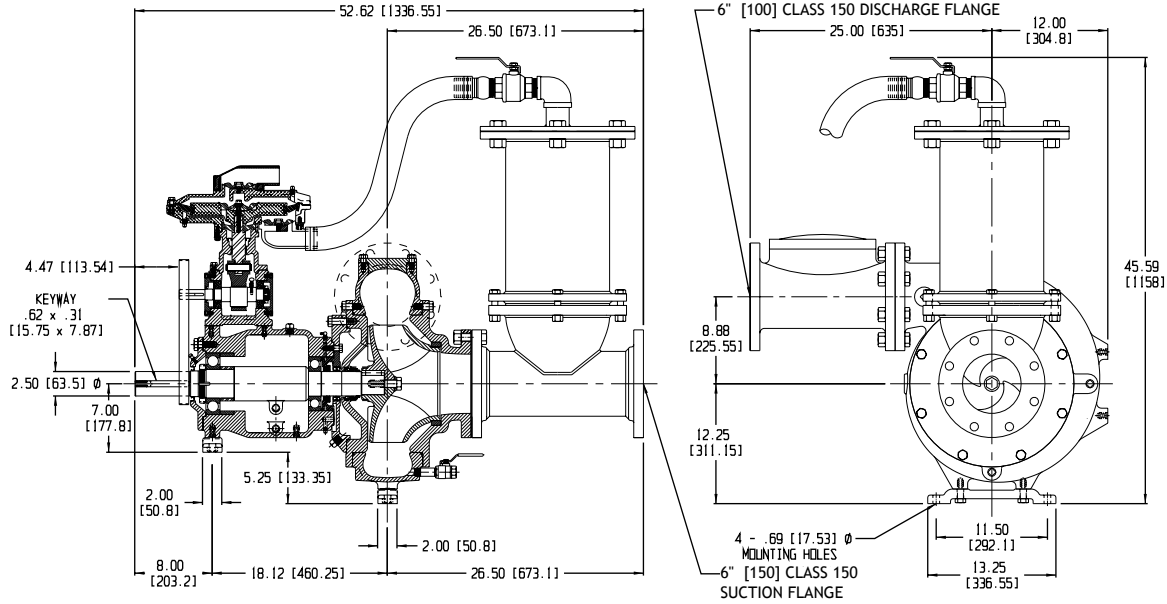
Construction Materials

| | Standard Construction | CD4MCu Stainless Steel |
|---------------|---------------------------------|------------------------|
| Impeller | CA6NM SS | CD4MCu |
| Volute | Ductile Iron ASTM A536 65-45-12 | CD4MCu |
| Wear Ring | ASTM A48 Class 40 Gray Iron | 316 SS |
| Suction Cover | Ductile Iron ASTM A536 65-45-12 | CD4MCu |
| Bracket | Ductile Iron ASTM A536 65-45-12 | CD4MCu |
| Backplate | Ductile Iron ASTM A536 65-45-12 | CD4MCu |

Mechanical Dimensions

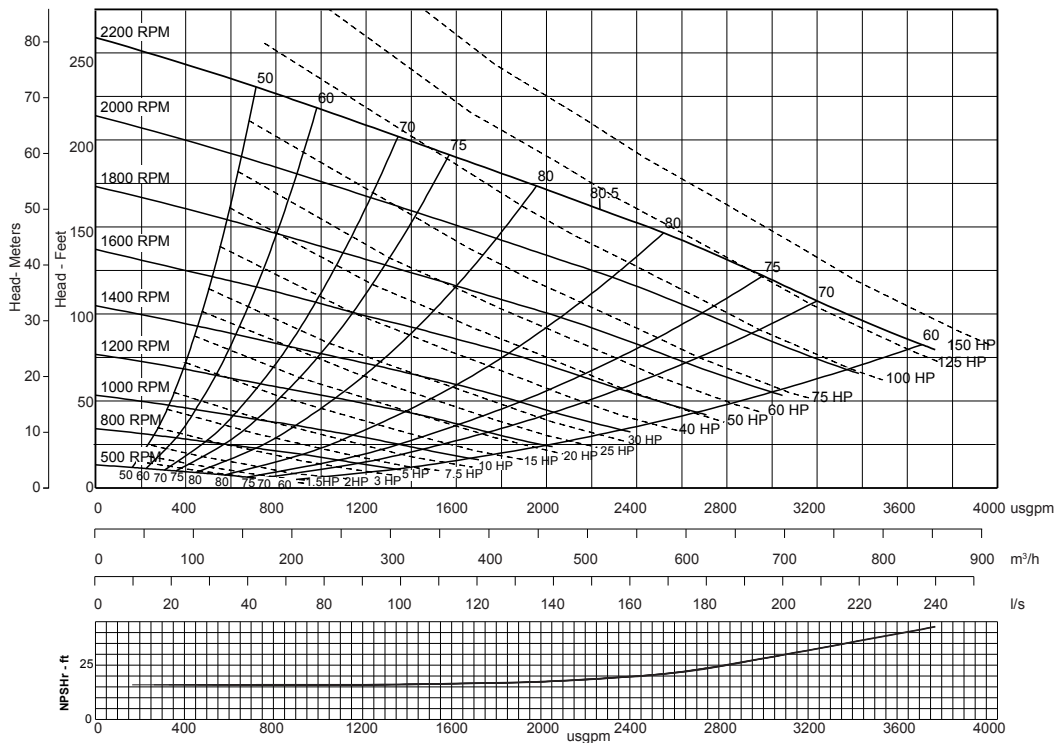
Typical Pump Configuration

PP66S12



Performance Curve

| | | | | |
|----------------|-------------------|-----------------|-------------------|----------------|
| Model: PP66S12 | Impeller Dia: 12" | Speed: Variable | Solids Size: 3.0" | Curve #A5856HQ |
|----------------|-------------------|-----------------|-------------------|----------------|



Note: Losses from priming system not shown